



Conferences & Meetings 2025

TLH Leisure Resort is the perfect venue for your next conference or meeting in Devon, with an excellent choice of function, meeting and break out rooms. Your guests and colleagues will be offered the best quality service from a professional experienced team who can help you plan every aspect of your event.

- Choice of 3 different hotel venues, all situated on a single 7 acre site.
- Choice of 6 meeting rooms for 2 to 200 delegates
- Free WiFi
- 5 minutes from mainline train station
- Located opposite Torquay's International Riviera Conference Centre
- Use of leisure facilities included in your 24 hour delegate rate
- Superb leisure and entertainment facilities



More information contact our events team:
01803 400199 | email: conference@tlh.co.uk

www.tlh.co.uk

TLH Leisure Resort, Belgrave Road, Torquay, TQ2 5HS

Day Delegate Packages

All prices are based on a minimum of 10 delegates.

Room Hire with Refreshments

- Data projector & screen available in most rooms
- Choice of room layouts including theatre, boardroom, U shape, classroom or cabaret
- Complimentary Wifi
- A serving is classed as a selection of tea & coffee with biscuits at various times throughout the day

| No. people | Room only | One serving | Two serving | Three serving | Four serving |
|------------|-----------|-------------|-------------|---------------|--------------|
| 10-14 | £10 | £12 | £14 | £16 | £18 |
| 15-19 | £9 | £11 | £13 | £15 | £17 |
| 20-24 | £8 | £10 | £12 | £14 | £16 |
| 25-29 | £7 | £9 | £11 | £13 | £15 |
| 30-39 | £6 | £8 | £10 | £12 | £14 |
| 40-49 | £5 | £7 | £9 | £11 | £13 |
| 50+ | £4 | £6 | £8 | £10 | £12 |

Prices are per person and for groups of less than 10, you will still be charged for 10 people.

TLH Standard Full Day & Half Day Delegate Package

Our popular TLH Standard Full Day and Half Day Delegate package includes:

- Data projector & screen available in most rooms
- Choice of room layouts including theatre, boardroom, U shape, classroom or cabaret
- Complimentary Wifi
- Room hire/basic equipment hire
- Half day – 4 hours morning or afternoon

Half Day £20.00pp

One serving of tea & coffee with biscuits plus **one item** from the list below:

- Pastries on arrival in the morning
- A selection of sandwiches at lunchtime
- Cream tea with scone, strawberry jam and clotted cream in the afternoon

Full Day £30.00pp

Three servings of tea & coffee with biscuits plus a selection of sandwiches, chips or wedges and a dessert.

Upgrade to Premium or Premium Plus

Our **Premium** and **Premium Plus Packages** include:

- Three servings of tea and coffee
- Data projector & screen available in most rooms
- Choice of room layouts including theatre, boardroom, U shape, classroom or cabaret
- Complimentary Wifi
- Room hire/basic equipment hire

Premium Package £34.00pp

Morning breakfast bap either with bacon or egg or sausage, for lunch a selection of sandwiches, chips or wedges and dessert.

Premium Plus Package £39.00pp

Hot buffet lunch with a dessert. Choose from:

- Chicken or Vegetable Tikka Masala (V) (GF) served with braised rice and mango chutney
- Beef and Mushroom Stroganoff (GF) served with wild rice
- Jacket potato with a choice of cheese, tuna or beans with salad

24 Hour Delegate Package £119.00pp

Our 24 Hour Delegate package includes the TLH Standard Day Delegate package as described plus:

- For lunch a selection of sandwiches, chips or wedges and dessert
- 3-course table d'hôte dinner
- Overnight accommodation
- Use of our outstanding Aztec Leisure facilities including the Aztec Gym and Pools
- Full English breakfast
- Use of one conference venue
- Complimentary Wifi

On-site Parking

Our car parks are now fully managed by ParkingEye Ltd.

- Full Day Attendees – £5.00 per car payable at Reception.
- Half Day Attendees – please pay at the Pay Stations or via the App.
- 24 Hour Delegates – free parking – register your vehicle at Reception.
- Event Organisers and Facilitators – free parking – register your vehicle at Reception.
- One group invoice can be raised for all delegates' cars if required.

Rates

All prices are based on a minimum of 10 delegates. Our 24 Hour Delegate rates are available Sunday–Thursday (excluding peak season). Supplements may apply for superior accommodation and additional meeting rooms. Please contact us for a quote on weekend or peak season 24 Hour Delegate Packages.

Equipment & Services

Our TLH Standard Day and 24 Hour Packages include the use of basic conference equipment. Additional audio-visual equipment or secretarial services can be organised on request at an extra charge.

More information contact our events team:

01803 400199 | email: conference@tlh.co.uk

www.tlh.co.uk

TLH Leisure Resort, Belgrave Road, Torquay, TQ2 5HS

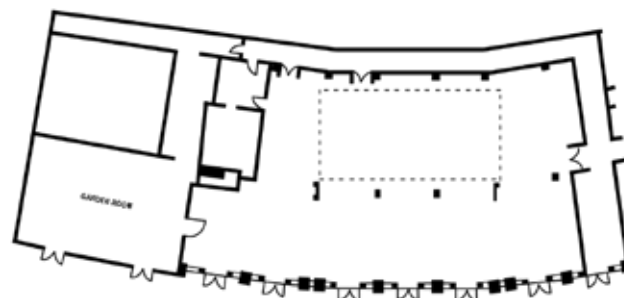
TLH Toorak Room Layout

The Chatsworth Suite

An attractive and versatile room with its own bar, ideally suited for use as a conference or entertainment venue. The Garden Room can be used in conjunction with the Chatsworth Suite or on its own as a smaller meeting room.

Venue Capacities

| | | | |
|------------|-----|-------------|------|
| U Shape: | 40 | Reception: | 200 |
| Theatre: | 220 | Length (m) | 21.2 |
| Classroom: | 150 | Width (m) | 13.6 |
| Boardroom: | 60 | Area (m sq) | 318 |

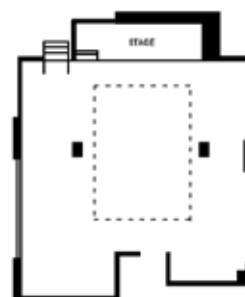


The Arlington Room

A versatile business and conference suite for up to 120. Suitable for use with our adjoining Conway Room.

Venue Capacities

| | | | |
|------------|-----|-------------|------|
| U Shape: | 26 | Reception: | 100 |
| Theatre: | 120 | Length (m) | 14.6 |
| Classroom: | 60 | Width (m) | 11.9 |
| Boardroom: | 34 | Area (m sq) | 173 |

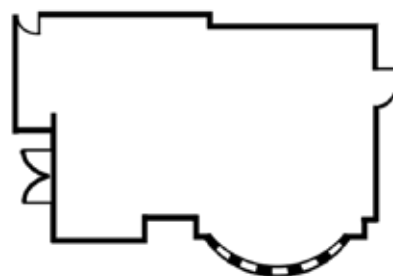


The Rougemont Room

An airy spacious room, ideal as a boardroom and for smaller meetings.

Venue Capacities

| | | | |
|------------|----|-------------|------|
| U Shape: | 20 | Reception: | 40 |
| Theatre: | 50 | Length (m) | 10.7 |
| Classroom: | 30 | Width (m) | 6.09 |
| Boardroom: | 20 | Area (m sq) | 65 |



The Greenway Room

Suitable for boardroom style meetings. Benefits from doors onto a sun terrace,

Venue Capacities

| | | | |
|------------|----|-------------|------|
| U Shape: | 18 | Reception: | 40 |
| Theatre: | 30 | Length (m) | 7.5 |
| Classroom: | 20 | Width (m) | 5.0 |
| Boardroom: | 15 | Area (m sq) | 37.5 |

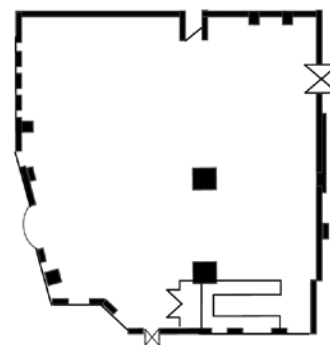


TLH Victoria Room Layout

The Richmond Lounge

A beautiful airy room with natural daylight and its own bar and carpeted seating area.

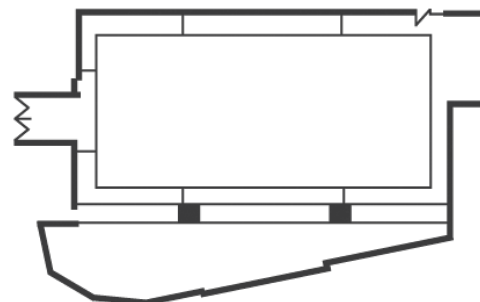
| | | |
|-------------------------|------------|-----------------|
| Venue Capacities | Reception: | 120 |
| U Shape: | 30 | Length (m) 15.5 |
| Theatre: | 150 | Width (m) 14 |
| Classroom: | 60 | Area (m sq) 210 |
| Boardroom: | 40 | |



The Warwick Lounge

For large exhibitions, presentations or product launches, the Warwick Ballroom is ideal, with direct access for loading and unloading. It also has its own bar and cloakroom facilities.

| | | |
|-------------------------|------------|-----------------|
| Venue Capacities | Reception: | 200 |
| U Shape: | 40 | Length (m) 19.5 |
| Theatre: | 250 | Width (m) 15.4 |
| Classroom: | 100 | Area (m sq) 300 |
| Boardroom: | 40 | |



Hampton

With a bright, south facing aspect, the Hampton is ideal for the smaller meeting and training courses up to 30 people.

| | | |
|-------------------------|------------|-------------------|
| Venue Capacities | Reception: | 24 |
| U Shape: | 16 | Length (m) 9.7 |
| Theatre: | 30 | Width (m) 6.1 |
| Classroom: | 15 | Area (m sq) 59.17 |
| Boardroom: | 20 | |

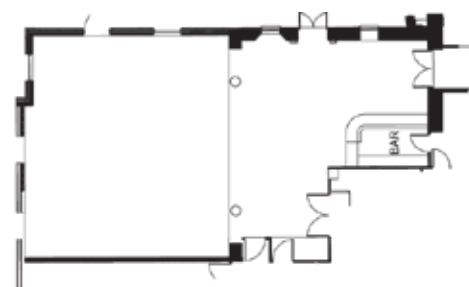


TLH Carlton Room Layout

The Madison Room

A purpose built meeting room with natural daylight and ideal for medium to larger sized meetings and training courses. It also has its own private bar.

| | | |
|-------------------------|------------|-------------------|
| Venue Capacities | Reception: | 90 |
| U Shape: | 24 | Length (m) 13.8 |
| Theatre: | 90 | Width (m) 9.6 |
| Classroom: | 60 | Area (m sq) 132.5 |
| Boardroom: | 34 | |



The Riviera Lounge

A sunny south facing aspect with superb panoramic views across Torbay, particularly well suited to receptions and theatre style events.

| | | |
|-------------------------|------------|-----------------|
| Venue Capacities | Reception: | 180 |
| U Shape: | NA | Length (m) 22 |
| Theatre: | 200 | Width (m) 12.5 |
| Classroom: | 60 | Area (m sq) 275 |
| Boardroom: | NA | |



More information contact our events team:

01803 400199 | email: conference@tlh.co.uk

www.tlh.co.uk

TLH Leisure Resort, Belgrave Road, Torquay, TQ2 5HS



Leisure Facilities

Included within your 24 Hour Delegate Package rate, you will also get full access to our incredible indoor and outdoor leisure facilities.

Aztec Gym

Our 40 workstation gym provides top-of-the-range CV and resistance equipment for a complete work-out. Professional instructors are on hand to advise. **Open daily from 7.00am – 9.00pm.**

Aztec Spa

For a complete escape, step into the special world of TLH Leisure Resort's Aztec Spa. Friendly professional therapists provide a wide range of facial and body treatments, guaranteed to soothe away the stresses of a busy day. For the ultimate in relaxation, book a session in Aztec Spa Fire & Ice, our luxury thermal suite experience. Call **01803 400190** to arrange an appointment.

Aztec Pools

Luxury indoor pools complex with 25 metre pool, fun pool, sauna, jacuzzi and steam room.

Open daily from 7.00am – 9.00pm.

(Free use to hotel guests, pool towels are available to hire)

Aztec Bistro

Drinks, snacks, light lunches and evening dining, the perfect place to unwind after a busy day.

Open daily from 10am - times vary throughout the year, call 01803 400145 for current times.

Aztec Games

2000 sq feet indoor games arena and sports bar. Enjoy a game of snooker and relax with a drink.

- 4 lane 10-pin bowling
- Snooker tables
- Pool tables
- Table tennis
- Air hockey

Open daily from 10.00 am – 11.00pm throughout the year.

Outdoor Leisure

There is an outdoor pool if you want to enjoy some fresh air at the end of your day. We also have a award-winning gardens and plenty of sun terraces too, if you want to catch the late evening sunshine whilst sipping your favourite drink.

Find out more



Accommodation

TLH Leisure Resort offers the ideal solution to all your business needs with a unique choice of accommodation, business and leisure all on one site. Included in our 24 hour rate your delegates will also have access to all our incredible leisure facilities to use in their free time.



TLH Toorak Hotel ★★★★★

With attentive service, delicious food and relaxing lounges combined with a slightly quieter atmosphere, the TLH Toorak is an ideal base for your conference or event.

- 92 en-suite bedrooms
- South facing Terrace Rooms share access to a private sun terrace
- Lift to most bedrooms
- The Abbey Restaurant with buffet style breakfast and Table d'hôte dinner selection with salad bar and additional hot choice from the buffet
- Free WiFi in bedrooms and public areas



TLH Carlton Hotel ★★★★★

Small and stylish with stunning views across Torbay from the sunny Riviera ballroom, the TLH Carlton prides itself on its friendly atmosphere. It is ideally located for our Aztec Spa and hosts a range of year-round Spa & Fitness Breaks.

- 70 en-suite bedrooms
- Link stairway and lift access to the main TLH complex and the Aztec Spa
- Lift to most bedrooms
- Buffet style breakfast and Table d'hôte dinner selection with salad bar and additional hot choice from the buffet
- Free WiFi in bedrooms and public areas



TLH Victoria Hotel ★★★★★

Fine period features, comfortable accommodation and relaxing lounges, combined with warm and friendly service, make for a restful atmosphere at the TLH Victoria.

- 85 en-suite hotel bedrooms
- Elegant restaurant
- Buffet style breakfast and extensive hot and cold buffet options for evening dining
- Free WiFi in bedrooms and public areas

How to find us...

So easy to find us... TLH Leisure Resort is conveniently situated opposite the Riviera International Conference Centre, near the centre of Torquay. We are just 400 yards from the sea front and ½ mile from the railway station.

Find us via your sat nav at
TQ2 5HS

